

# MAGO

Ethical, sustainable materials  
for better buildings.

TOLL FREE: 1-844-242-4510

LOCAL: 604-674-5336

WWW.MAGOBP.COM

*Get on board with MagO!*



## MagO Cladding System

Commercial grade exterior siding system

**Rainscreen:** Integral pressure equalized drainage cavity is built right in with full lateral and vertical pressure equalization.

**Any Weather Install:** No caulking required, all joints are shiplapped. Panels are supported on clips and tracks that mount over the water barrier into sheathing. Fasteners are hidden and the clips can be extended to allow for insulation.

### Wide Choice of Finishing Options:

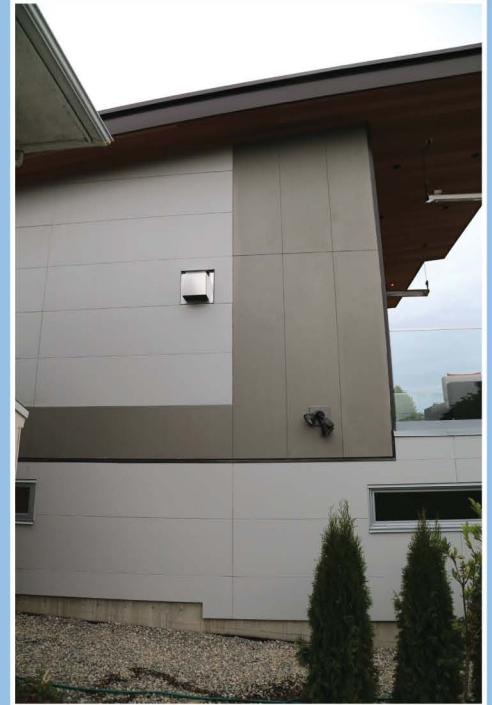
- Paint, custom colors
- Acrylic stucco
- Cement stucco stamped
- Powder coat
- Veneer

**Increased Safety:** MagO can easily be cut with a carbide saw blade, the dust has no carcinogens or toxins, much safer for the workers.

**Made in BC:** Panels and trim are made for each order meaning custom sizes and finishes do not add to the delivery time. Most projects can be delivered within 4 weeks

**Guaranteed:** MagO panels are guaranteed for 30 years. MagO is stable, it has very low movement hygro metrically or thermally and is unaffected by freeze thaw cycles.

**Commercial Grade:** non combustible (tested to S-135), able to withstand 200 km/hr winds (tested to E-330). 15 mm or 20 mm panel thickness.



BUILDING UNIT  
FIRE RESISTANCE CLASSIFICATION  
DESIGN NO. U061 & W490  
SEE UL FIRE RESISTANCE DIRECTORY  
43TR

**MAGNUM**  
FIREBLOCK

MagO Building Products uses Magnum® MgO board exclusively.

# MAGO

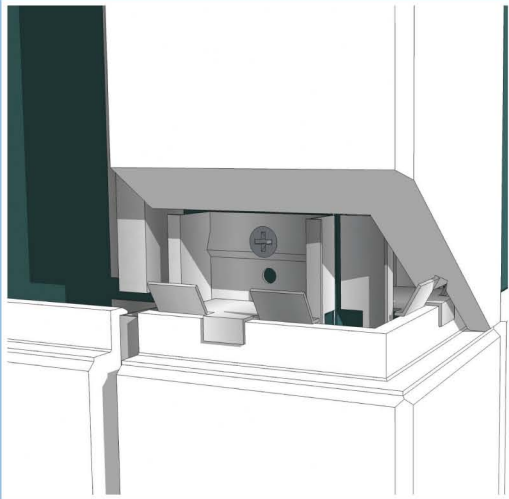
Ethical, sustainable materials  
for better buildings.

TOLL FREE: 1-844-242-4510

LOCAL: 604-674-5336

WWW.MAGOBP.COM

*Get on board with MagO!*



## MagO Cladding System

Commercial grade exterior siding system

### Services Provided by MagO

- Free estimates
- Free site inspections
- Custom orders delivered within four weeks of order
- Training provided

### Easy Installation

Fast installation in any weather and easy to maintain

- 1 Create base line around building
- 2 Install base track
- 3 Place first panel onto track
- 4 Attach top / side clips, screw to sheathing
- 5 Repeat as necessary

### Tools Required

Circular saw with carbide blade, screw gun, and paper dust mask.



*"Really cool panelling. We are painting for Paul Blakey of Infinity and really impressed!! Been sharing with other contractors."*

- Tanja Powell, Powell Painting

*"We are installing MagO on one of our projects and are absolutely loving it - from ease of install, the rainscreen aspect and priming and painting. Our team highly recommends it!"*

- Chantalle Elliot, Infinity Pacific Custom Homes Ltd



BUILDING UNIT  
FIRE RESISTANCE CLASSIFICATION  
DESIGN NO. U061 & W490  
SEE UL FIRE RESISTANCE DIRECTORY  
43TR

**MAGNUM**  
FIREBLOCK

MagO Building Products uses Magnum® MgO board exclusively.